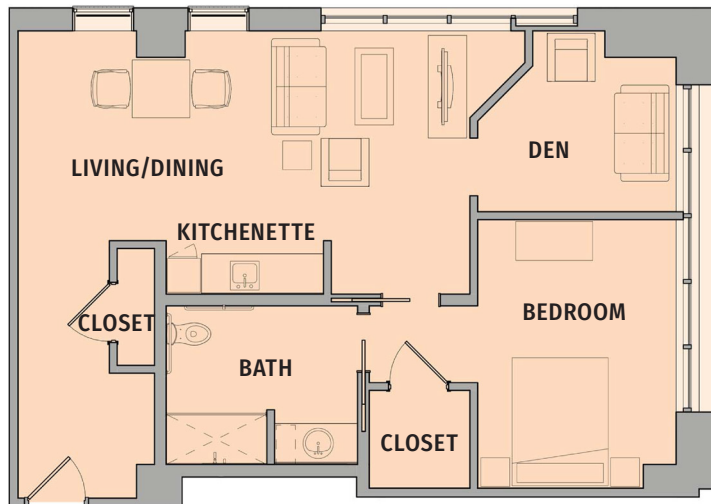


## ASSISTED LIVING

INCLUDES ONE-BEDROOM AND ONE-BEDROOM + DEN OPTIONS.



**ONE-BEDROOM**  
540 sq. ft.



**ONE-BEDROOM  
+ DEN**  
795 sq. ft.

## ASSISTED LIVING

### THESE RESIDENCES INCLUDE:

- » All-inclusive monthly fee
- » Spacious and bright one-bedroom and one-bedroom plus den apartments with kitchenettes
- » Bedroom furniture provided (optional) and wall mounted TV
- » All-day dining, featuring three chef-prepared meals catered to your preferences and dietary needs, plus healthy snacks
- » Person-centered service plans supported by licensed and caring staff
- » 24-hour licensed nursing, under the direction of a full-time RN
- » Medication supervision and administration
- » Social integration with the Ingleside community
- » Access to the Ingleside Center for Healthy Living, including on-site physician offices, therapy, and Cultural Arts Center
- » A continuum of support on-site with short-term rehabilitation, long-term skilled nursing, and memory support\*
- » All utilities, including basic phone and cable TV
- » Daily housekeeping, laundry, and linen service
- » Mission-driven, not-for-profit community
- » Onsite security
- » Emergency call system with onsite nurse response
- » Diverse social, spiritual, recreational, and educational programs
- » Local scheduled shuttle transportation for shopping
- » Guest apartments available for visiting family and friends\*

*\*Available for an extra fee*

## ASSISTED LIVING 2025 MONTHLY FEE

FLOOR PLAN	APPROXIMATE SQUARE FEET	ALL-INCLUSIVE MONTHLY FEE	ALL-INCLUSIVE SECOND PERSON FEE
Locust	540	\$14,783	\$8,447
Silverbell	549	\$14,783	\$8,447
Ironwood	558	\$14,783	\$8,447
Juniper	600	\$14,783	\$8,447
Juneberry	605	\$14,783	\$8,447
Yellowwood	795	\$15,818	\$8,447
Redbud	889	\$17,001	\$8,447

*Additional one-time community fee of \$7,500 per person upon occupancy.*



REV111124



## MEMORY SUPPORT ASSISTED LIVING

NEIGHBORHOOD CONTAINS 16 RESIDENCES ON EACH WING (EAST AND WEST).



## MEMORY SUPPORT ASSISTED LIVING

### THESE RESIDENCES INCLUDE:

- » All-inclusive monthly fee
- » Secure, spacious, and sun-filled private residences with large windows
- » Bedroom furniture provided (optional) and wall mounted TV
- » Beautiful secured courtyard
- » All-day, flexible dining featuring chef-inspired meals, stocked kitchens, and hydration stations
- » Person-centered service plans supported by licensed and caring staff
- » Individualized creative arts programs offering music therapy, art, horticulture, movement, pet, and recreational therapy
- » 24-hour licensed nursing, under the direction of a full-time RN
- » Caring team educated in best practices in dementia care
- » Medication supervision and administration
- » Holistic fitness and well-being program
- » Technology-based engagement opportunities incorporated into daily life
- » Family support, education, and engagement
- » Social integration with the greater Ingleside community
- » Access to the Ingleside Center for Healthy Living, including on-site physician offices, therapy, and Cultural Arts Center
- » A continuum of support on-site with short-term rehabilitation and long-term care\*
- » All utilities including basic phone and cable TV
- » Daily housekeeping, laundry, and linen service
- » Local scheduled shuttle transportation for shopping
- » Guest apartments available for visiting family and friends\*

*\*Available for an extra fee*

## MEMORY SUPPORT ASSISTED LIVING

### 2025 MONTHLY FEE

FLOOR PLAN	APPROXIMATE SQUARE FEET	ALL-INCLUSIVE MONTHLY FEE	ALL-INCLUSIVE SECOND PERSON FEE
Oak	344	\$14,909	\$7,786
Cherry	377	\$14,909	\$7,786
Myrtle	432	\$16,344	\$7,786
Linden	477	\$16,344	\$7,786
Walnut	550	\$17,778	\$7,786

*Additional one-time community fee of \$7,500 per person upon occupancy.*



REV111124