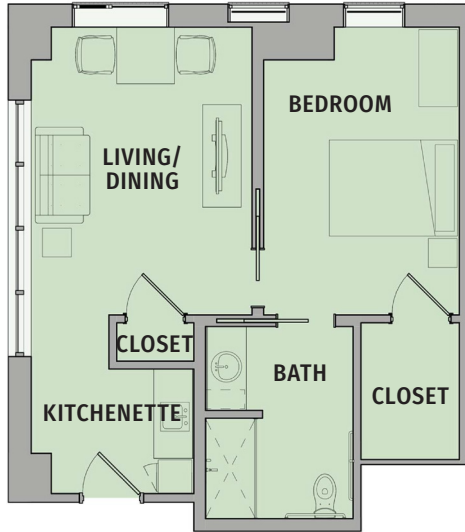
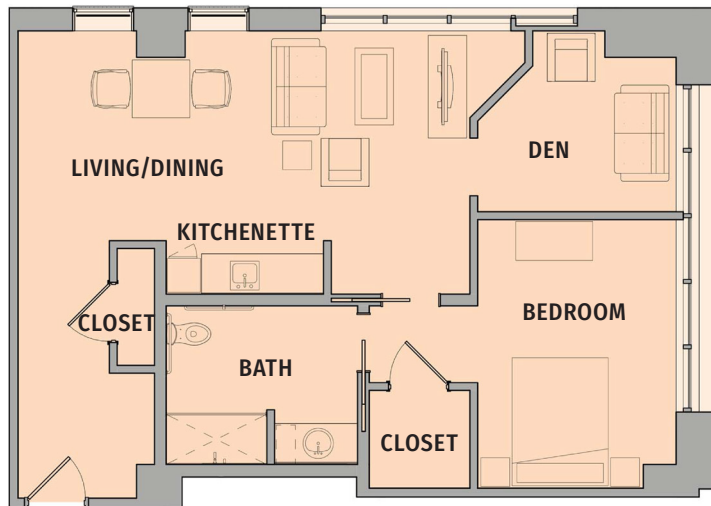


## ASSISTED LIVING

INCLUDES ONE-BEDROOM AND ONE-BEDROOM + DEN OPTIONS.



**ONE-BEDROOM**  
540 sq. ft.



**ONE-BEDROOM  
+ DEN**  
795 sq. ft.

## ASSISTED LIVING

### THESE RESIDENCES INCLUDE:

- » All-inclusive monthly fee
- » Spacious and bright one-bedroom and one-bedroom plus den apartments with kitchenettes
- » Bedroom furniture provided (optional) and wall mounted TV
- » All-day dining, featuring three chef-prepared meals catered to your preferences and dietary needs, plus healthy snacks
- » Emergency call system with onsite nurse response
- » Diverse social, spiritual, recreational, and educational programs
- » Local scheduled shuttle transportation for shopping and religious services
- » Guest apartments available for visiting family and friends\*
- » Person-centered service plans supported by licensed and caring staff
- » 24-hour licensed nursing, under the direction of a full-time RN
- » Medication supervision and administration
- » Social integration with the *Ingleside* community
- » Access to the Ingleside *Center for Healthy Living*, including on-site physician offices, therapy, wellness center, salon and spa
- » A full continuum of support on-site with short-term rehabilitation, long-term skilled nursing, and memory support\*
- » All utilities, including basic phone and cable TV
- » Daily housekeeping, laundry, and linen service
- » Mission-driven, not-for-profit community
- » Onsite security

\*Available for an extra fee

## ASSISTED LIVING

### 2021 MONTHLY FEE

RESIDENCE TYPE	APPROXIMATE SQUARE FEET	ALL-INCLUSIVE MONTHLY FEE	ALL-INCLUSIVE SECOND PERSON FEE
Locust	540	\$10,868	\$6,210
Silverbell	549	\$10,868	\$6,210
Ironwood	558	\$10,868	\$6,210
Juniper	600	\$10,868	\$6,210
Juneberry	605	\$10,868	\$6,210
Yellowwood	795	\$11,628	\$6,210
Redbud	889	\$12,498	\$6,210

*Additional one-time community fee of \$7,500 per person upon occupancy.*

