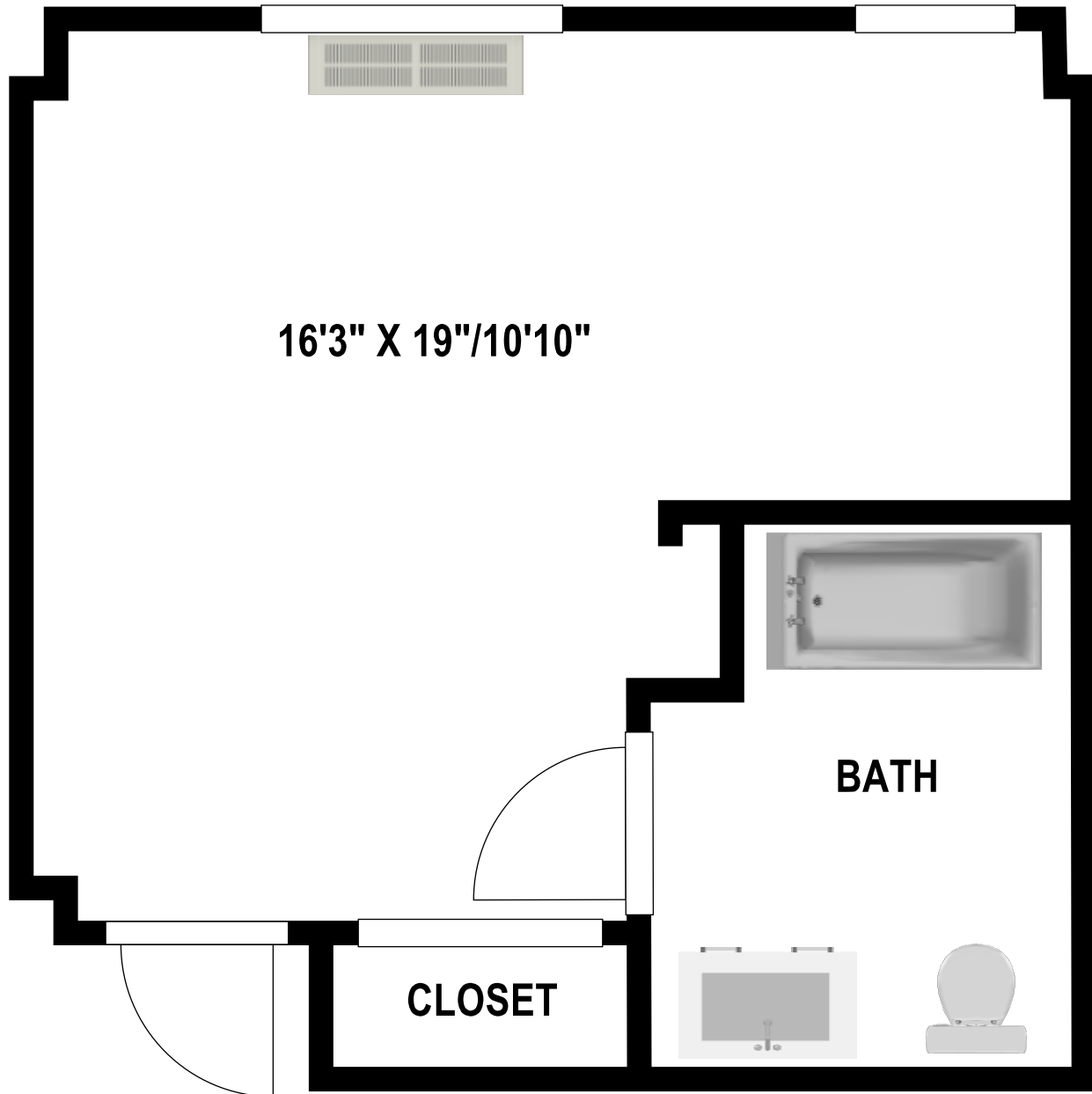




WESTMINSTER
AT LAKE RIDGE
ENGAGED LIVING

APT 2030
APPROX. 375 sq. ft.
ASSISTED LIVING



12191 Clipper Drive | Lake Ridge, VA 22192 | Tel: 703-496-3440 | Fax: 703-496-3443 | www.wlrva.org

Larger floorplan images are available upon request. Units are subject to minor dimension and design variations.

